

LAUNCHING

SEAGULL POINT

WATER HAS A NEW FRONT



MOHAMMED BIN RASHID
AL MAKTOUM CITY

DISTRICT ONE



We are delighted to announce the launch of an elegant new tower at District One, with exclusive amenities.

Featuring 1, 2 and 3 bedroom apartments with views of the iconic Crystal Lagoon, this tower is a vibrant addition to Dubai's most prestigious community.

Register today for special pre-launch benefits.



EXCLUSIVE AMENITIES

FULLY FURNISHED APARTMENTS



CAFÉ

Friends flock together





LIBRARY

Let your imagination soar





GYM

Believe you can fly



KIDS PLAY AREA

Fun takes flight

ICONIC LOCATION



10 MINS
BUSINESS BAY



5 MINS
THE MEYDAN HOTEL



12 MINS
DIFC



15 MINS
BURJ AL ARAB



12 MINS
WORLD TRADE CENTRE



20 MINS
INTERNATIONAL AIRPORT

AMENITIES



Bicycle Track



Logging Track



Supermarket



Pharmacy



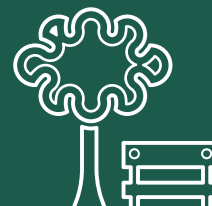
School



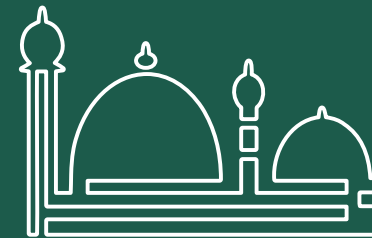
Crystal Lagoon
& Beachfront



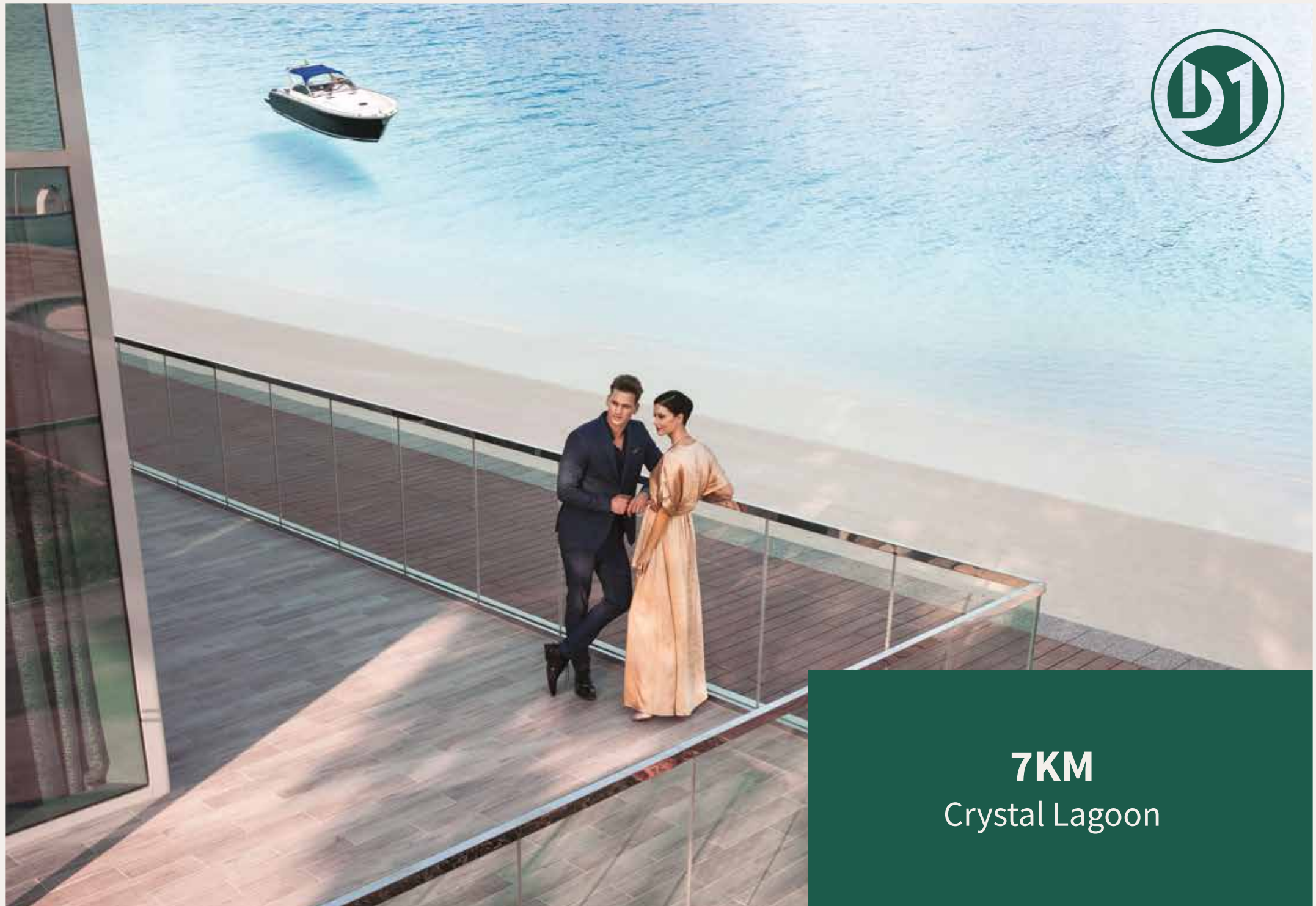
Kids
play area



Parks



Mosque



7KM
Crystal Lagoon

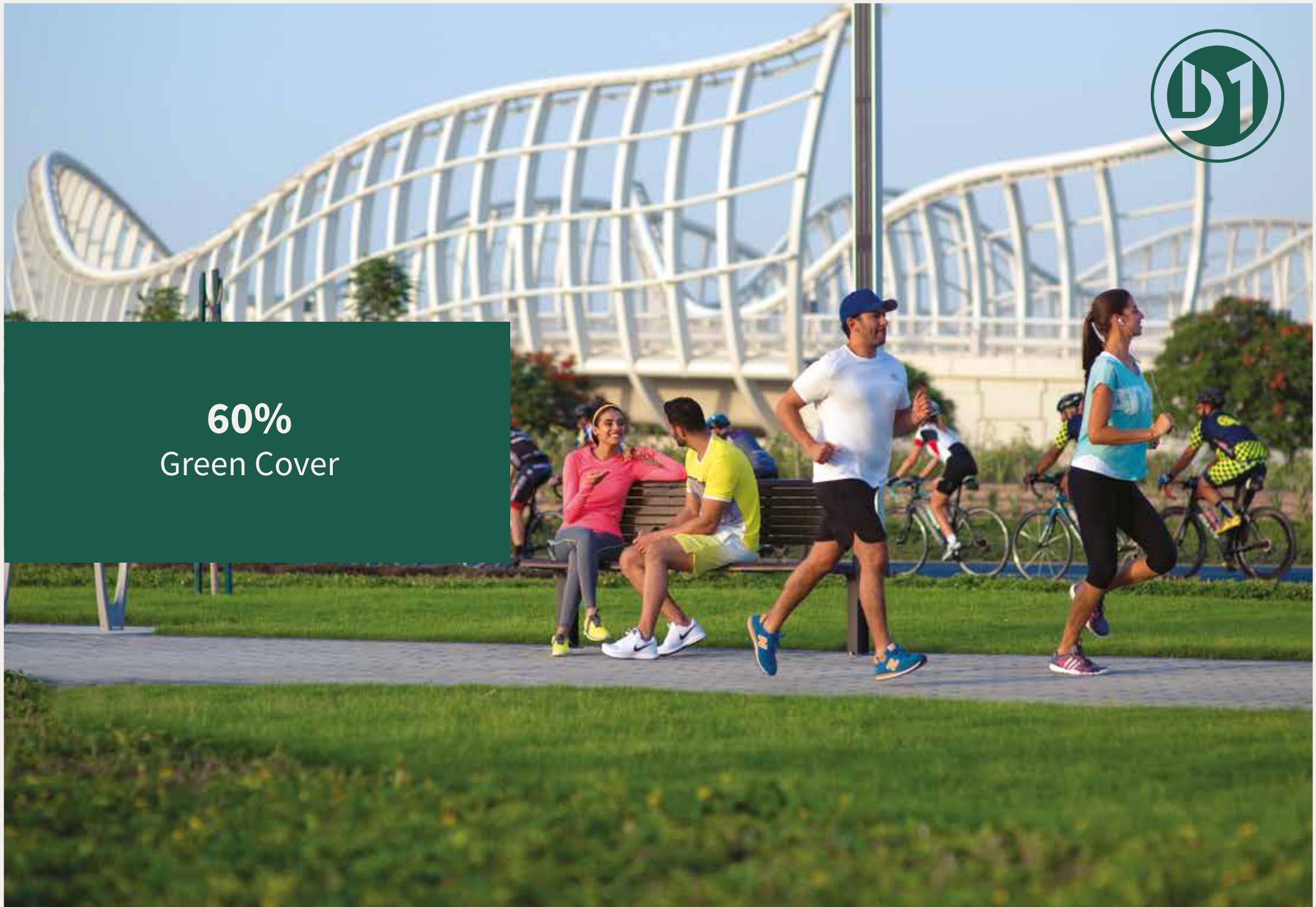
8.4 KM

Cycling and Running Track





60%
Green Cover



MASTER PLAN



TOWER LOCATION MAP



SEAGULL POINT

WATER HAS A NEW FRONT.

Disclaimer: The design layouts, dimensions, guidelines, visualizations, renderings, images and any other information as contained herein is provided for illustrative purposes only and subject to change at any time at the sole discretion of the Developer.

TOWER EXTERIOR



Disclaimer: The design layouts, dimensions, guidelines, visualizations, renderings, images and any other information as contained herein is provided for illustrative purposes only and subject to change at any time at the sole discretion of the Developer.

TOWER EXTERIOR & VIEWS



Disclaimer: The design layouts, dimensions, guidelines, visualizations, renderings, images and any other information as contained herein is provided for illustrative purposes only and subject to change at any time at the sole discretion of the Developer.